



# HIGGINS PARK + PLAYFIELD RESERVE MASTER PLAN

E-WORKSHOP 2 SUMMARY

MAY 2020



TOWN OF  
VICTORIA PARK

PLACE  
LABORATORY



# CONTENTS

**Prepared by:**



Level 1, 289 Murray Street  
Perth, WA, Australia  
Tel. +61 8 9227 9313

**Prepared for:**

Town of Victoria Park  
99 Shepperton Road,  
Victoria Park  
Western Australia 6100

**Consultant Team:**

Leisure Consultancy Services: A Balanced View (ABV)

©PLACE Laboratory  
This document has been prepared by PLACE Laboratory on behalf of  
the Town of Victoria Park

## 2. WORKSHOP 2 SUMMARY

Introduction	4
Exercise 1 - Objectives	5
Exercise 2 - Elements	7
Exercise 3 - Options Scenarios	16
Exercise 4 - Other Suggestions	20
Quick Poll Results	22

Document Control

NAME OF PROJECT	Higgins Park and Playfield Reserve Master Plan
DOCUMENT REFERENCE	P:\2005 Higgins Park Master Plan\04 Drawings & Reports\A-Site\Adobe Sheets
PROJECT NUMBER	2005
PROJECT TEAM	Anna Chauvel, Walter Van Der Loo, Tom Lucey and Cara Sealey

REVISION	DATE ISSUED	PREPARED BY	APPROVED BY	DATE APPROVED
-	15-05-2020	Tom Lucey +	Walter Van Der Loo	15-05-2020
1	22-05-2020	Tom Lucey +	Walter Van Der Loo	22-05-2020
2	04-06-2020	Tom Lucey +	Walter Van Der Loo	04-06-2020
3	03-08-2020	Tom Lucey +	Walter Van Der Loo	03-08-2020

**PART 2**  
**WORKSHOP 2**  
**SUMMARY**

# WORKSHOP 2 SUMMARY

## INTRODUCTION

On Friday 24 of April 2020 the Town of Victoria Park commenced workshop 2 of the Higgins Park and Playfield Reserve Master Plan as part of the ongoing community consultation for the project. Due to advice and legislation put in place from State and National authorities, the workshop took place as an online forum where the members of the Design Reference Group (DRG) were invited to log-in to the Town of Victoria Park's 'Your Thoughts' web page and undertake a series of exercises that were prepared by the consultant team and the Town of Victoria Park. The online forum was held for 2 weeks, culminating on the 4th of May 2020.

Following the conclusion of the online workshop, a virtual meeting was held with the DRG and the Town of Victoria Park for the consultant team and the Town to provide an overview of the workshop results. Towards the end of this meeting an online 'quick poll' was held that enabled the DRG to answer a series of question relating to specific elements of Higgins Park and Playfield Reserve.

The following pages provide a summary of each exercise undertaken with the supporting graphics that were included in each of the exercises.

A short description of the exercises that the DRG were asked to undertake is as follows;

### Exercise 1 - Objectives

- / The DRG were asked to build on the 5 themes that were identified as part of workshop 1 by providing objectives that could be undertaken to achieve each theme.

### Exercise 2 - Elements

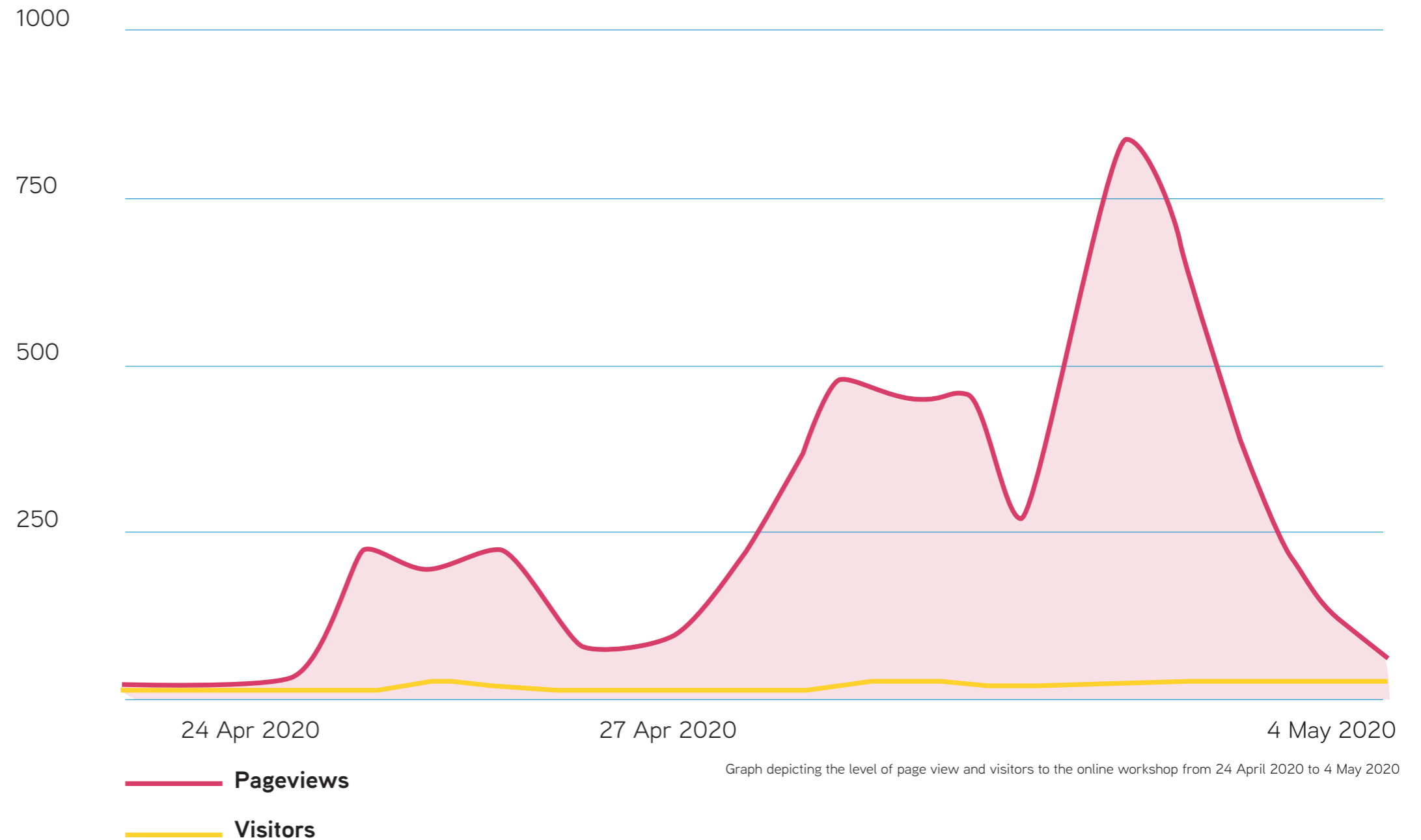
- / The DRG were asked to vote on a series of design elements that could potentially be seen in Higgins Park and Playfield reserve. They were asked to rate each element on a scale from most preferred to least preferred.

### Exercise 3 - Option Scenarios

- / The DRG were shown a series of scenarios that related to the spatial exploration of each of the three design options. The DRG were asked to provide comment about each scenario.

### Exercise 4 - Other Suggestions

- / In the exercise the DRG were shown a map of Higgins Park and Playfield Reserve and were asked to make further suggestions.



Graph depicting the level of page view and visitors to the online workshop from 24 April 2020 to 4 May 2020

# WORKSHOP 2 SUMMARY

## EXERCISE 1 - OBJECTIVES

The Design Reference Group (DRG) were asked to build on the 5 themes that were produced as part of workshop 1. Under the summarised comments column (middle column) a summary of the DRG's responses has been included. These responses have then been synthesised into objectives and considerations (right column).

### THEME



**SUPPORTING A VARIETY OF USES**



- / Activity track and nodes
- / "Attractive public open space for sporting use offering a variety of places for various activities"
- / Shared club rooms
- / Additional shade for increased summer use
- / Concerns regarding relying on millen (no control over future)
- / Low impact uses
- / Winter – additional parking to existing verges
- / Ensure sport facilities do not preclude the activities of other sports
- / All day, active vibrant precinct – "hive' of all-day activity by multiple users"
- / Concern that any fencing required a may limit the existing uses
- / Community use and potential cafe
- / Retaining public open space for non-sporting groups



### OBJECTIVES AND CONSIDERATIONS

#### A place that becomes a hive of all-day activity

Things to consider:

- / Ensure sports activities do not preclude the activities of other user groups by providing a mix of passive and active recreation activities for all user groups to engage with in the park.
- / Think about how the site might be used in different seasons. For example, summer Vs winter usage. Allow for sufficient shade and shelter by utilising the existing and proposed tree canopy or providing built shade structures at activity points.
- / Provide lighting to certain areas to enable the use of the site into the evenings.
- / Consideration of the impacts of each of the 'variety of uses' upon residents
- / Consideration of the impacts of each of the 'variety of uses' upon residents



**EASY TO GET AROUND AND THROUGH**



- / Access to good public toilets
- / Support school children access
- / Support aged care resident access
- / Alternate transport (cycle etc)
- / Connect Playfield to the Park
- / Intuitive way finding
- / Crossing the park and circuits
- / Disabled access from multiple locations
- / Lighting
- / Parking
- / Part of larger network (walkers, joggers etc)
- / Ensure fencing does not create barriers to meaningful access
- / connection between Millen Primary and Higgins Park



#### A place that is well connected

Things to consider:

- / Utilise the site's natural assets, vistas and proposed/existing infrastructure by creating a sense of flow and rhythm to the paths and node locations.
- / Consider Crime Prevention Through Environmental Design (CPTED) principles.
- / Ensure that the width of track is suitable for users to share with on coming users or to walk with small groups.
- / Maximise the larger network of cycling and footpaths surround the park by providing pronounced entry points at the right locations. Provide appropriate infrastructure such as places to lock your bike, water fountains and places to take a break.
- / Consider wayfinding not just as signage but as markers in the landscape to orientate and direct visitors.
- / Ensure any additional fencing does not create barriers to meaningful access



**A PLACE FOR ALL**



- / Inclusive play
- / Diverse community groups – "somewhere that people from a diverse range of backgrounds can have something to draw them in."
- / Mental health
- / Business incubator
- / Multi-generational connections
- / Facilities that support community events



#### A place that includes our diverse community groups

Things to consider:

- / Utilise universal design principles to ensure people of all ages and abilities can enjoy the park.
- / Offer a range of activities for people to connect with the park.
- / Create playspaces that are inclusive to multi-generational users. For example, toddlers, teens, young adults parents and grandparents.
- / Consider how the design can benefit the mental and physical health of different user groups. For example, the use of sensory planting for either its stimulating or calming qualities and providing opportunities for all age fitness.
- / ensure outcomes continue to accommodate for passive recreational users such as dog walkers and exercisers.

# WORKSHOP 2 SUMMARY

## EXERCISE 1 - OBJECTIVES

### THEME

### SUMMARISED COMMENTS

### OBJECTIVES AND CONSIDERATIONS



**MAINTAINING A SENSE OF SPACIOUSNESS**



- / Avoid fragmentation i.e. consolidate - "blend and designate different usage zones so that the total area Playfield street down to Higgins park appear as one"
- / Integrate built elements into the landscape
- / Not too noisy
- / Maintain "visual flow"
- / Retain large uninterrupted spaces
- / A large number of participants expressed concerns regarding the fencing required for a synthetic hockey turf. Other comments referenced the need for good design in the placement and fencing of a synthetic turf.
- / Ensure any additional fencing should not further impede the flow around the space
- / Minimise visual and spatial impacts of introduced elements on the open space



#### A place that responds to its surroundings

Things to consider:

- / Utilise the sites topography to integrate built elements such as terracing, nodes, playspaces.
- / Create a sense of 'visual flow' and cohesion between the built elements through details such as colour, material selections and form.
- / Make sure enough open space is left for passive recreation such as walking your dog, picnics on the lawn or kick-about spaces for all sports.
- / Minimise visual impact of any fencing needs within each option



**WONDERFUL NATURE**




- / Tree retention
- / More trees (net positive)
- / Acknowledgment of Noongar culture
- / Natural areas (re-vegetation)
- / Consideration of environmental impact on both flora and fauna. Habitat for bird life
- / Nature play



#### A place that connects people to nature

Things to consider:

- / Retain existing trees and utilise them for their environmental, social and economic benefits. Where appropriate identify existing trees that are deemed suitable to integrate into designed elements such as a playground, walking/jogging tracks, nodes or spectator seating.
- / Identify areas within the site that are appropriate for re-vegetation treatments such as stabilising embankments or buffer zones
- / Utilise planting treatments as a means to engage in education or play. For example, use appropriate species for nature play, habitat creation or creating awareness of indigenous knowledge.



**OTHER OBJECTIVES**



- / Minimise impact on surrounding residents
- / consideration to passive / non formal sporting uses of the site
- / community cohesion



#### A place that respects the surrounding residents

Things to consider:

- / Think about the surrounding residents and how they will be impacted by any activities that currently occur or could occur and provide designed elements that help to minimise this. For example the use of buffer planting along the edges of the site to help reduce noise or the location of activity nodes within the park to reduce any impacts on residents.
- / Ensure the outcomes can continue to support the parks' passive users

# WORKSHOP 2 SUMMARY

## EXERCISE 2 - ELEMENTS

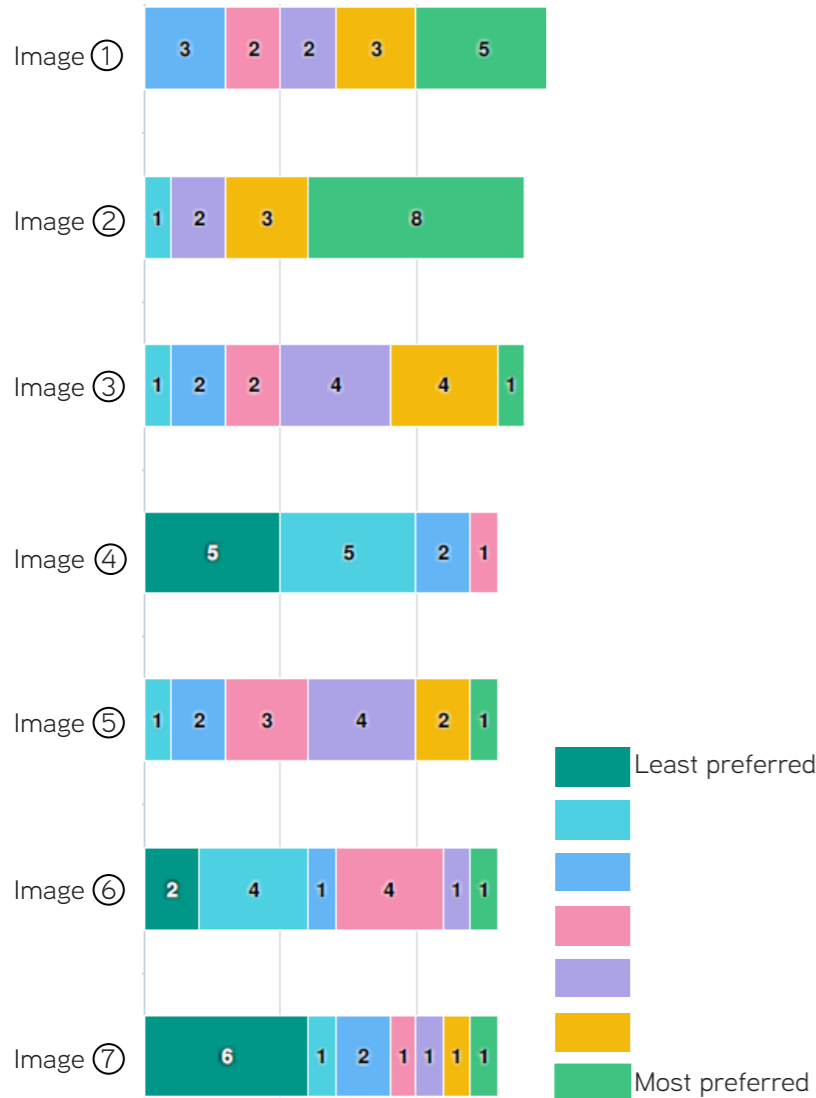
For exercise 2 the Design Reference Group were asked to view a variety of images of design elements that could be included at Higgins Park and Playfield Reserve. They were asked to rate each image from their least preferred to their most preferred.

The elements categories were as follows;

- / Paths and Trails
- / Building Styles
- / Planting Treatments
- / Fencing
- / Play
- / Retaining Systems
- / Wheeled Sports
- / Picnic and BBQ Facilities
- / Fitness equipment

\*Disclaimer: The results of each survey are provided on the following pages but do not guarantee this will be included in the final design.

### PATHS AND TRAILS SURVEY RESULTS:



## Paths and Trails



### PATHS AND TRAILS SURVEY RESULTS:

- / Visitors: 18
- / Contributors: 16
- / 2 contributors skipped this question and made the following comments;
  - 1 contributor said they didn't like any of them.
  - 1 contributor did not feel like this fits with the objective.

### LIKES

- / Images 1, 2 were the most popular.
- / Image 1 shows a sealed path through turf with contemporary line marking/graphic treatments.
- / Image 2 shows clearly defined path that is relatively wider than other paths shown. The path meanders under mature trees.

### DIS-LIKES

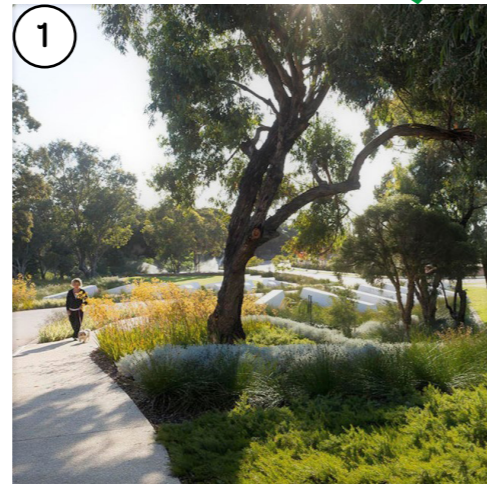
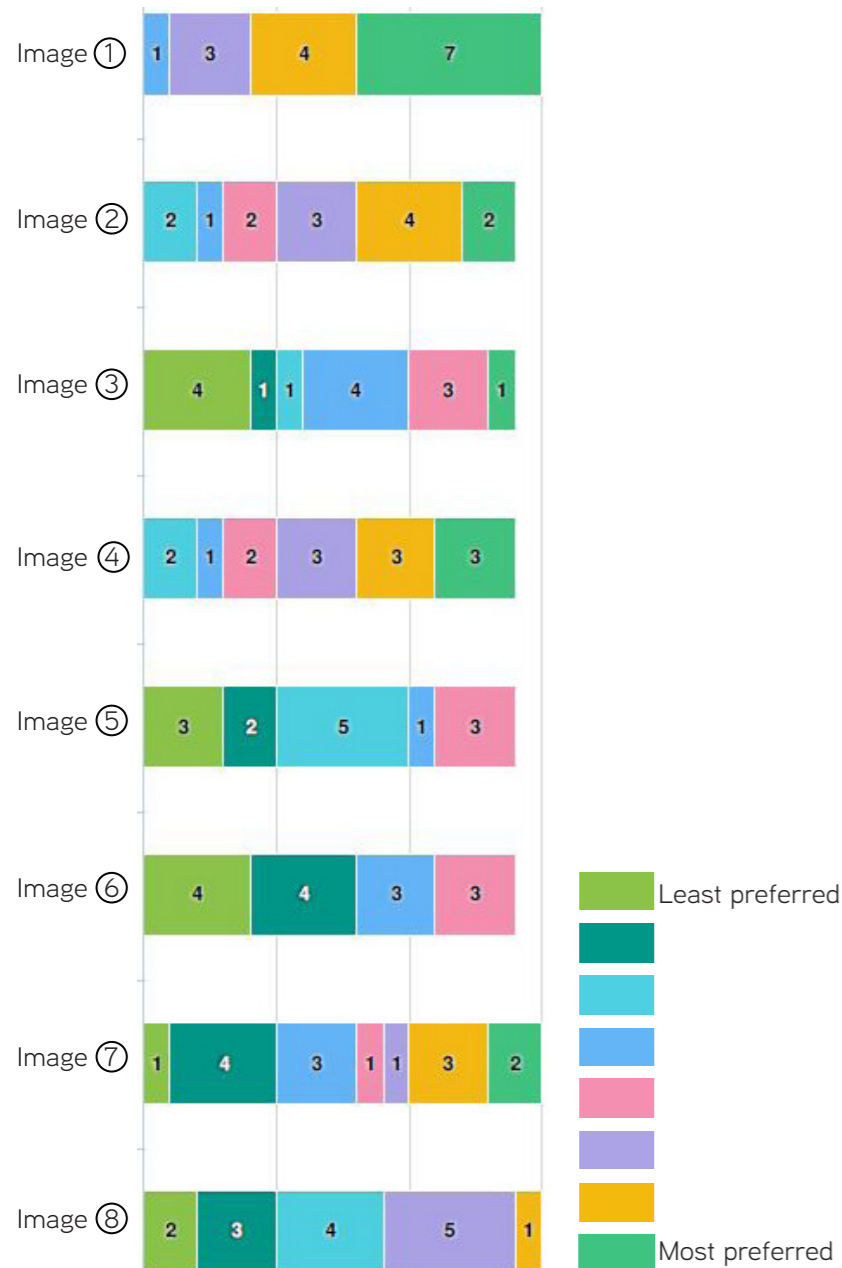
- / Images 4, 6 and 7 were the least popular.
- / Image 4 shows a sealed path through turf and garden bed with an angular pedestrian flow.
- / Image 6 shows a sealed path through turf without any curved pedestrian flow.
- / Image 7 shows an unsealed path that meanders through trees and under-storey planting.

### SOMEWHERE IN THE MIDDLE

- / Image 3 and 5 had the majority of votes weighted towards the middle percentage of preferences
- / Both images show paths through turf with light coloured paving. Image 3 shows a path width suitable for jogging.

## Planting Treatments

### PLANTING TREATMENT SURVEY RESULTS:



### PLANTING TREATMENT SURVEY RESULTS:

- / Visitors: 18
- / Contributors: 16
- / 1 contributors skipped this question and made the following comments;
  - 1 contributor said they didn't like any of them

### LIKES

- / Images 1, 2 and 4 were the most popular.
- / Image 1 shows lush contemporary native planting throughout existing trees.
- / Image 2 shows clearly defined planting beds that frames a large open turf area. Existing trees are incorporated into the design.
- / Image 4 shows large mature trees within an expanse of open turf.

### DIS-LIKES

- / Images 3, 5 and 6 were the least popular.
- / Image 3 shows a series of flowering feature beds
- / Image 5 shows trees within mulch beds.
- / Image 6 shows a stylised contemporary planting scheme with the use of boulders and gravels.

### SOMEWHERE IN THE MIDDLE

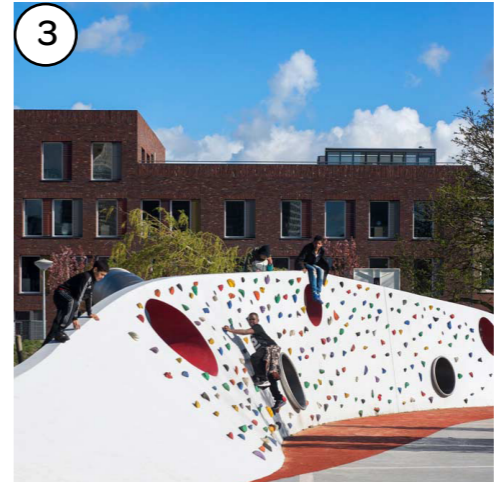
- / Image 8 had a slightly larger percentage weighting towards less preferred as opposed to preferred. Image 8 shows a rain garden within a parking area.



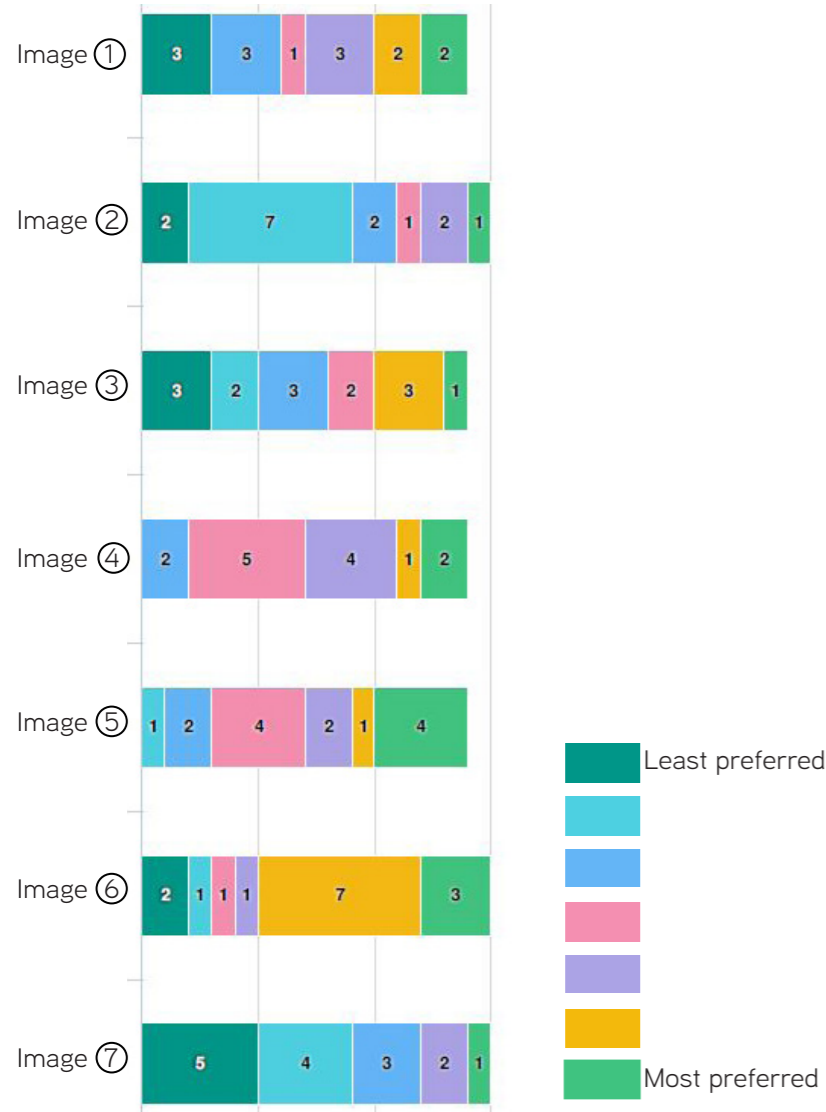
# WORKSHOP 2 SUMMARY

## EXERCISE 2 - ELEMENTS

### Play



### PLAY SURVEY RESULTS:



### PLAY SURVEY RESULTS:

/ Visitors: 18  
 / Contributors: 16  
 / 2 contributors skipped this question and made the following comments;  
 - 1 contributor said the images were too small to see in detail. Of the above I preferred 5,6 & 1 as from the small image it seemed to blend with the green aesthetics that are similar to Higgins/Fred Bell Pde.  
 - 1 contributor said they didn't like any of them.

### LIKES

/ Images 1 and 6 were the most popular.  
 / Image 1 shows a relatively modest play area with traditional play equipment and some nature play elements.  
 / Image 6 shows loose parts nature play and timber steppers nature play.

### DIS-LIKES

/ Images 2 and 7 were the least popular.  
 / Image 2 shows a bespoke play space with a relatively large enclosed climbing space.  
 / Image 7 shows a relatively large play space with custom and off-the-shelf play items within sand.

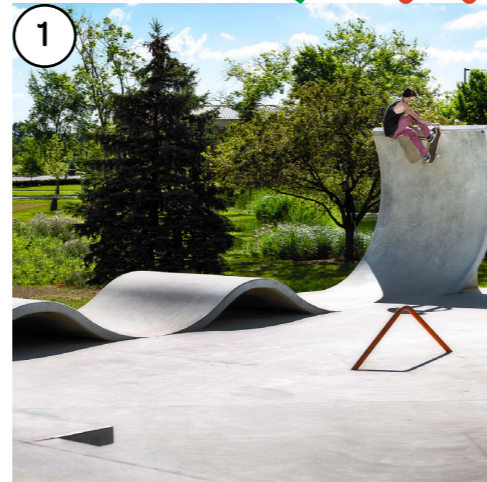
### SOMEWHERE IN THE MIDDLE

/ Image 4 shows advanced nature play items and had a mix of responses with a slightly higher percentage weighting towards most preferred.  
 / Image 5 had an even spread of responses, with slightly higher percentage of people placing it towards a preferred option

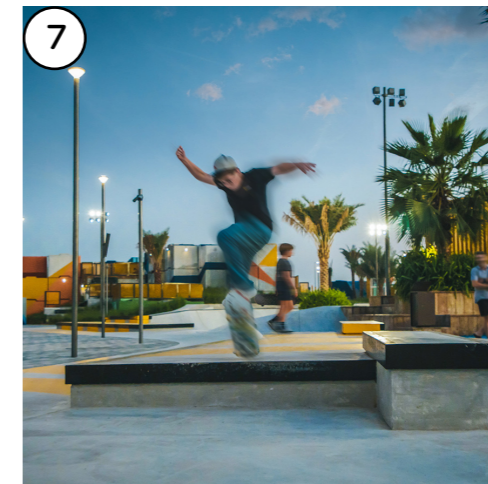
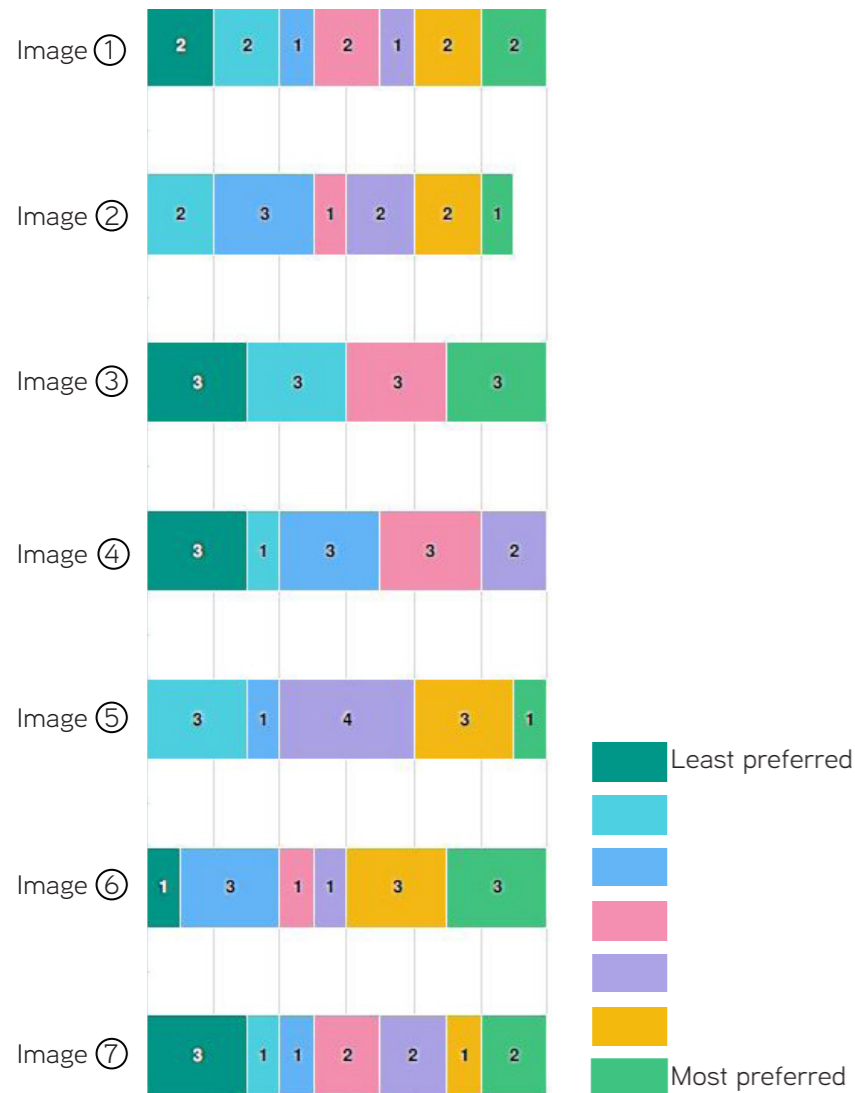
# WORKSHOP 2 SUMMARY

## EXERCISE 2 - ELEMENTS

### Wheeled Sports



### WHEELED SPORTS SURVEY RESULTS:



### WHEELED SPORTS SURVEY RESULTS:

- / Visitors: 18
- / Contributors: 16
- / 4 contributors skipped this question and made the following comments;
  - 2 contributors said they didn't like any of them
  - 1 contributor said they prefer something not so big in scale for wheeled sports. Bike/scooter path around the path.
  - 1 contributor said they don't feel this fits with the objective.

### LIKES

- / Images 1 and 6 were the most popular
- / Image 1 shows various skateboarding elements with relatively higher skill level.
- / Image 6 shows elements included in a bicycle skills track with varying skill levels.

### DIS-LIKES

- / Images 4 was the least popular
- / Image four shows a BMX track with advanced skill level.

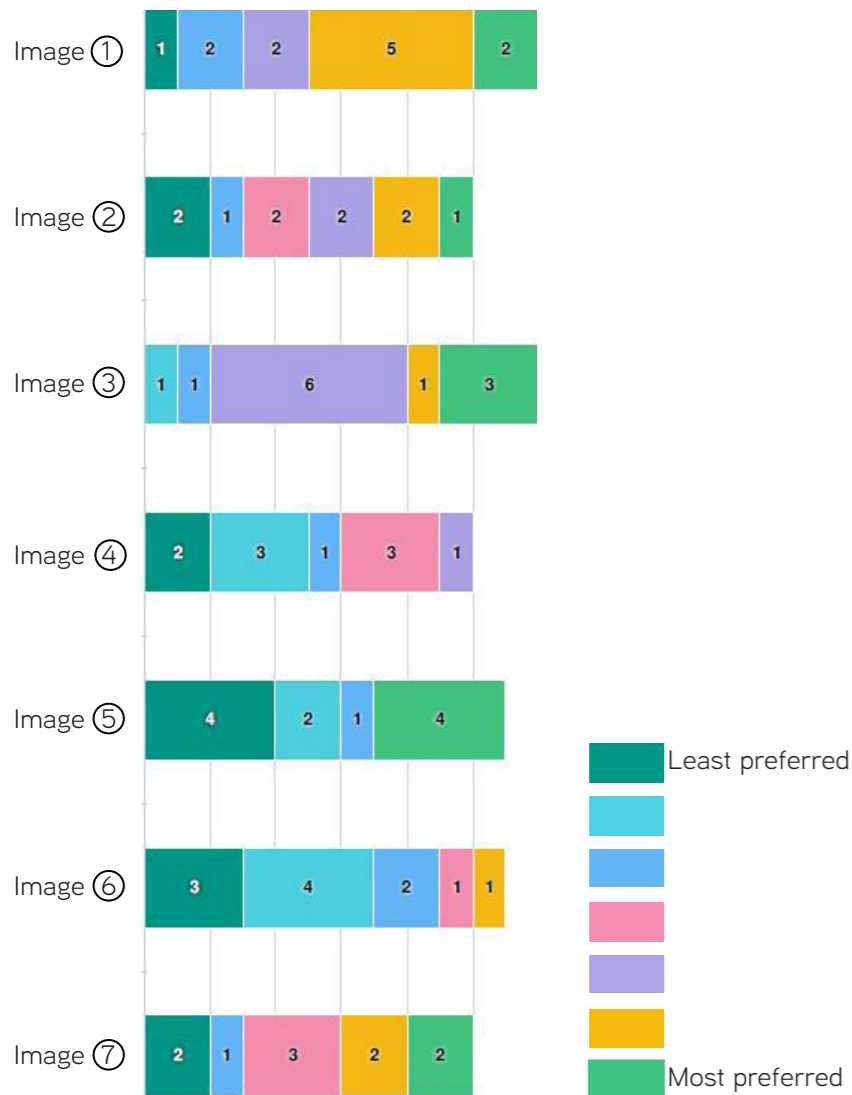
### SOMEWHERE IN THE MIDDLE

- / Image 3 had a relatively even mix of responses with a slightly higher percentage weighting towards least preferred.
- / Image 5 had a an even spread of responses, with a slightly higher percentage of people placing it towards a preferred option.

## Building Styles



### BUILDING STYLES SURVEY RESULTS:



### BUILDING STYLES SURVEY RESULTS:

- / Visitors: 18
- / Contributors: 16
- / 3 contributors skipped this question and made the following comments;
  - All 3 contributors said they didn't like any of them.

### LIKES

- / Images 1, 3 and 5 were the most popular.
- / Image 1 shows a contemporary pavilion with open glazing facing onto a sporting field. A spectator area is incorporated into the building.
- / Image 3 shows a building with a pronounced entry point with double height glazing and curved geometry.

### DIS-LIKES

- / Images 5 and 6 were the least popular.
- / Image 5 is the existing facilities that are provided at Higgins Park.
- / Image 6 shows a building with minimal ornamentation and a sawtooth pitched roof-line. Glazing is provided to the entire width of one side.

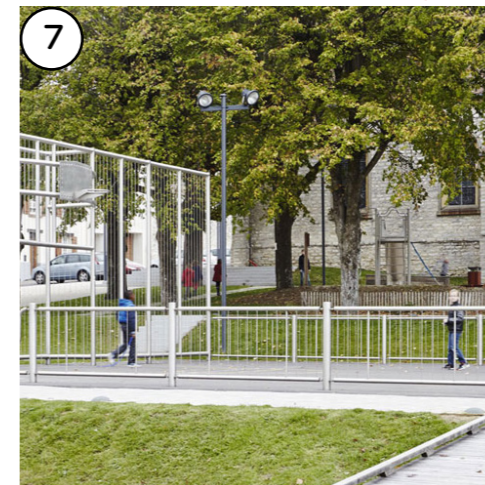
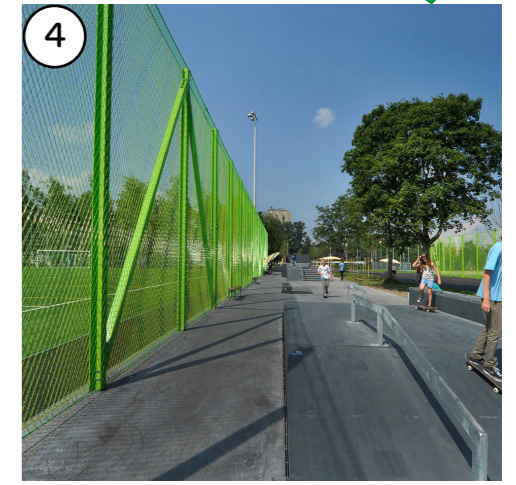
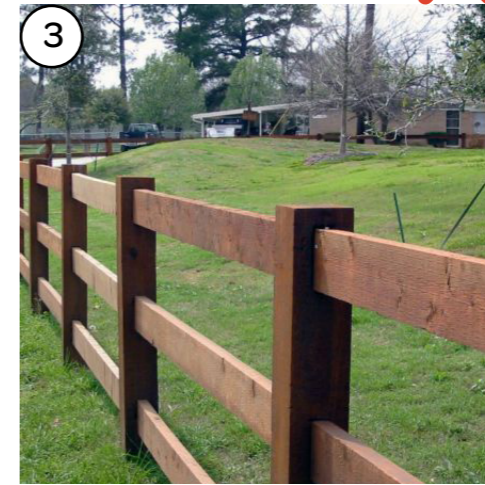
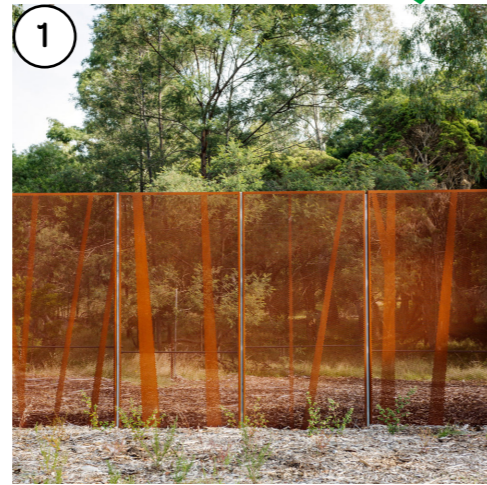
### SOMEWHERE IN THE MIDDLE

- / Image 2 shows a building with minimal ornamentation and straight geometry fronting onto a large turfed area.
- / Image 7 shows a central building with a pronounced entry and landscaped forecourt.

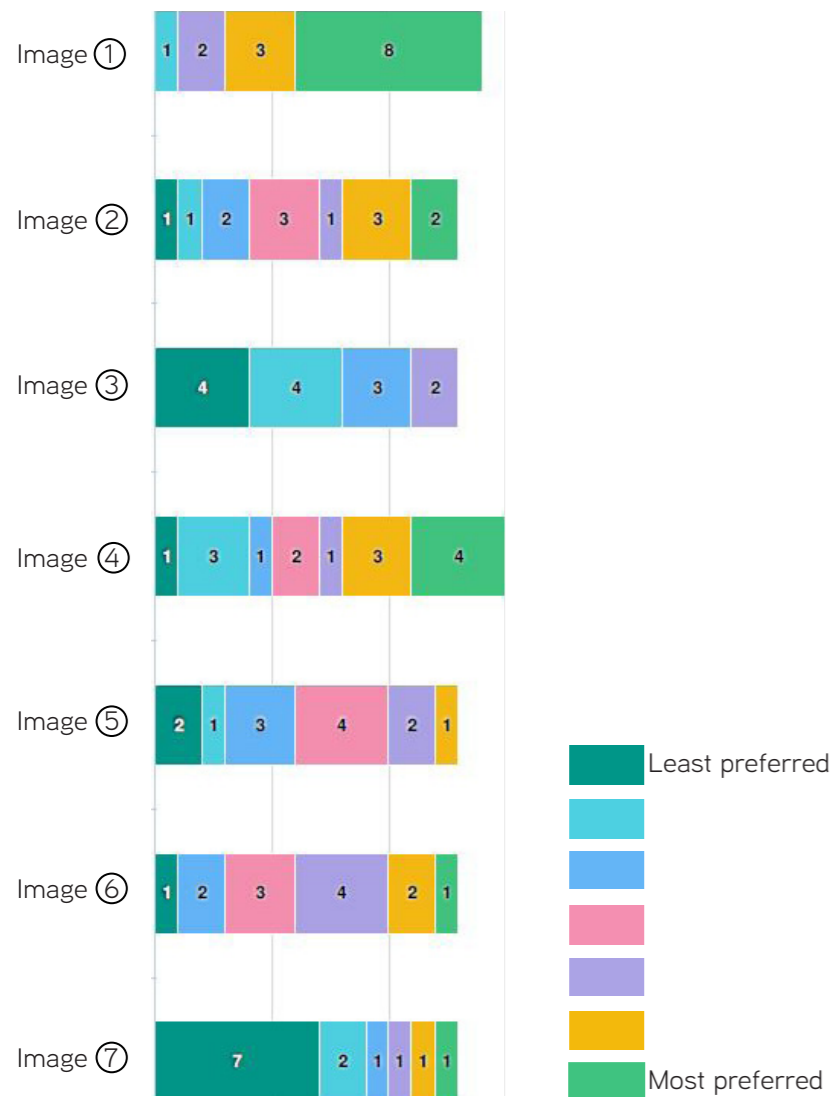
# WORKSHOP 2 SUMMARY

## EXERCISE 2 - ELEMENTS

### Fencing



### FENCING SURVEY RESULTS:



### FENCING SURVEY RESULTS:

/ Visitors: 18  
 / Contributors: 16  
 / 8 contributors skipped this question and made the following comments;  
 - 1 contributor said they didn't like any of them.  
 - 7 contributors said they don't feel this fits with the objective.

### LIKES

/ Images 1, 2 & 4 were the most popular.  
 / Image 2 shows a relatively sleek fence design with glass fencing surrounding a sporting court.  
 / Image 4 shows a coloured mesh fencing with different sports uses surround it.

### DIS-LIKES

/ Images 3, 6 and 7 were the least popular.  
 / Images 3 & 6 show timber fencing in differing arrangements.  
 / 7 contributors said they don't feel this 'fits with the objective'

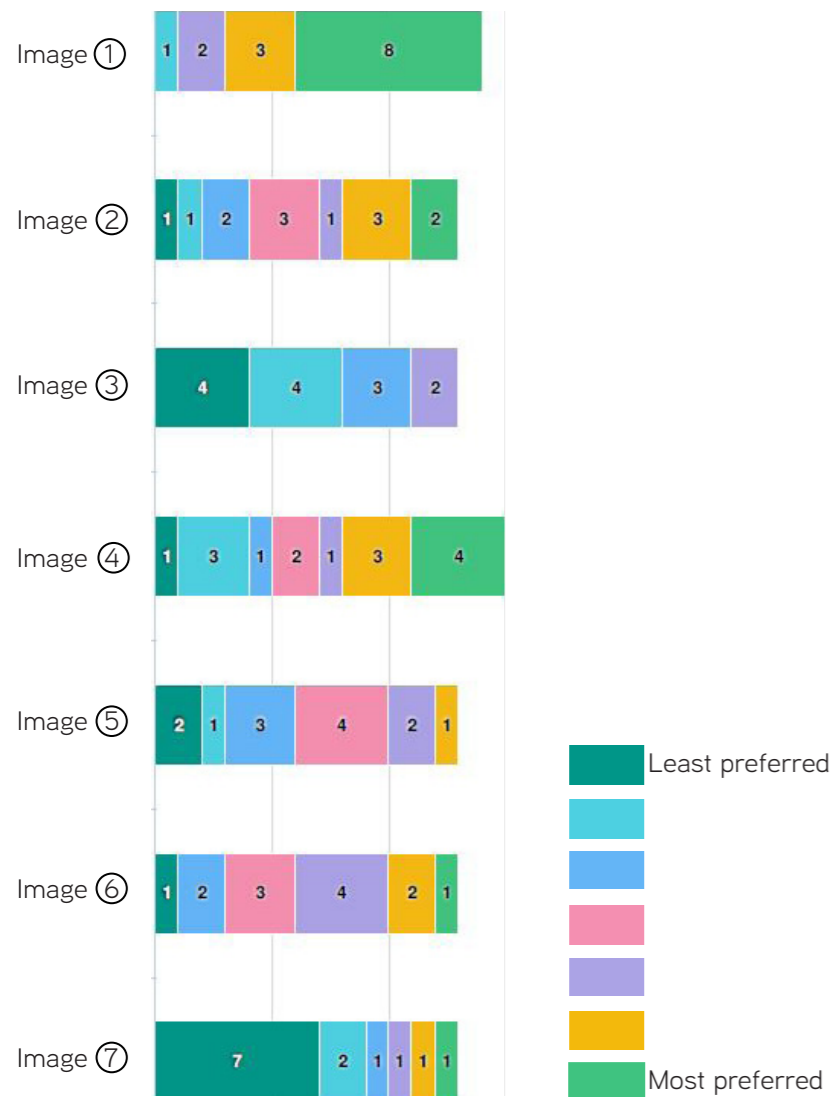
### SOMEWHERE IN THE MIDDLE

/ Image 5 shows a combination of semi-permeable timber fencing softened with planting.

# Retaining Systems



## RETAINING SYSTEMS SURVEY RESULTS:



## RETAINING SYSTEMS SURVEY RESULTS:

/ Visitors: 18  
 / Contributors: 16  
 / 1 contributor skipped this question and made the following comments:  
 - 1 contributor said they don't feel this fits with the objective.

## LIKES

/ Images 1 and 4 were the most popular.  
 / Image 1 shows wide terraced retaining that incorporates seating and trees. The geometry of the retaining walls respond to the natural topography of the site by creating a more gradual terrace.  
 / Image 4 shows a crib-lock retaining wall that is planted with a mix of species to create a vertical green wall. The angle of the retaining is relatively steep.

## DIS-LIKES

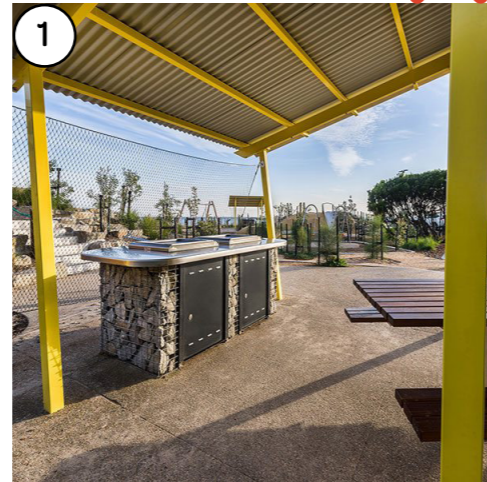
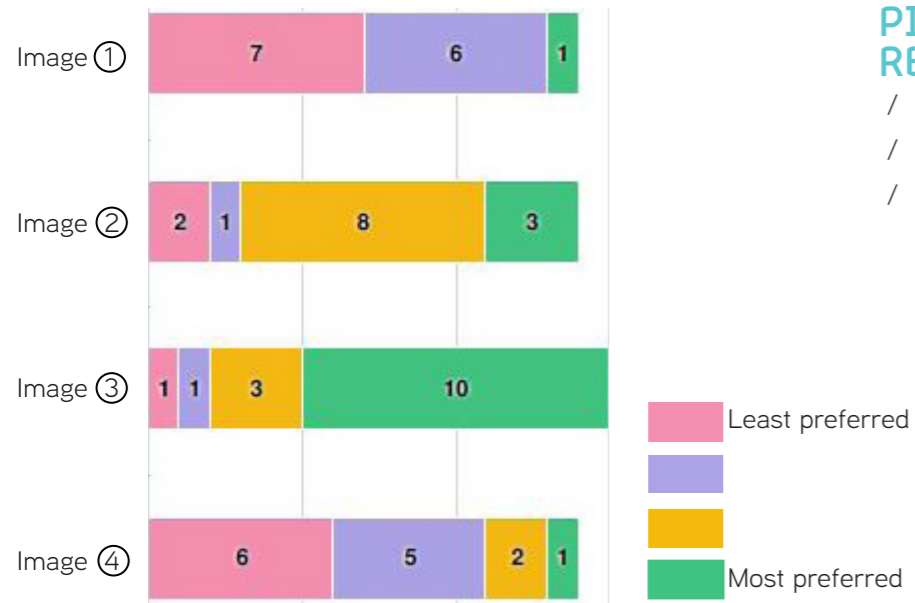
/ Images 3 and 7 were the least popular.  
 / Image 3 shows corten steel retaining walls with varying angles and heights. Pedestrian ramps are built into the retained landscape.  
 / Image 7 shows gabion style retaining with planting to the base of the retaining wall. The angle of the retaining is relatively steep. Image 7 had the highest weighting towards least preferred.

## SOMEWHERE IN THE MIDDLE

/ Image 5 shows curved limestone retaining walls that are terraced into the slope providing opportunities for seating.

## Picnic and BBQ Facilities

### PICNIC AND BBQ FACILITIES SURVEY RESULTS:



### PICNIC AND BBQ FACILITIES RESULTS:

- / Visitors: 18
- / Contributors: 16
- / 1 contributor skipped this question and made the following comments;
  - 1 contributor said they didn't like any of them.

### LIKES

- / Images 3 was the most popular
- / Image 3 relatively low-key approach to a picnic and BBQ facilities without a shade structure. It utilises the surrounding mature trees for shade and a sense of enclosure.

### DIS-LIKES

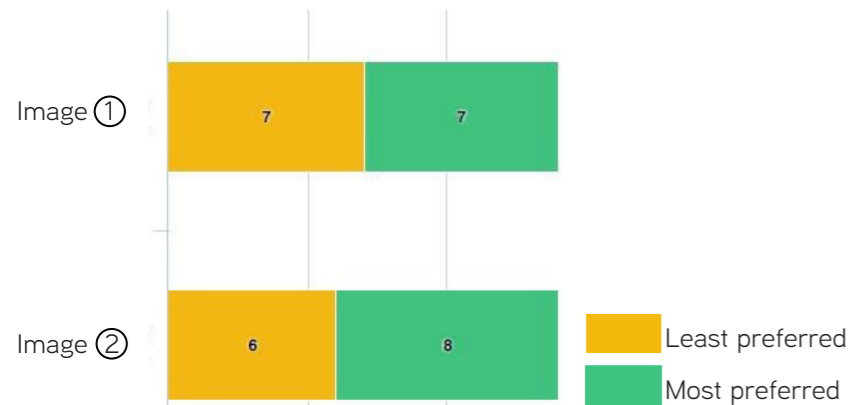
- / Image 1 and 4 were the least popular.
- / Image 1 shows a shade structure with coloured highlights. It has concrete ground surface and has minimal planting surround it.
- / Image 4 shows a re-claimed shipping container with bespoke seating and steps that lead to a raised gathering space.

### SOMEWHERE IN THE MIDDLE

- / Image 2 shows picnic and BBQ facilities amongst trees with a custom shade structure.

## Fitness Elements

### FITNESS ELEMENTS SURVEY RESULTS:



### FITNESS ELEMENTS SURVEY RESULTS:

- / Visitors: 18
- / Contributors: 16
- / 2 contributors skipped this question and made the following comments;
  - 2 contributors said they didn't like any of them.
  - 1 contributor said they prefer the workout station at Tomato Lake and some products available by Lark industries.

### LIKES AND DIS-LIKES

- / Both images had an even split of preference suggesting a need for both approaches to including fitness equipment.

# WORKSHOP 2 SUMMARY

## EXERCISE 3 - OPTIONS SCENARIOS

In Exercise 3 the Design Reference Group were asked to make comment and suggestions on each of the three options. A series of scenarios for each option were provided along with a description of each scenario that enabled the Design Reference Group to understand the key moves for each scenario.

The following pages provide a summary of the feedback that was gained from the Design Reference Group in regards to each scenario.

### OPTION 1, SHARED (1)

Investigation of the addition of a synthetic hockey turf to Higgins Park (in addition to a football oval).

#### SCENARIO 1



#### SCENARIO 2



#### SCENARIO 3



### OPTION 2, SHARED (2)

Consideration of adding two grass hockey pitches, in addition to the synthetic pitch.

#### SCENARIO 1



#### SCENARIO 2



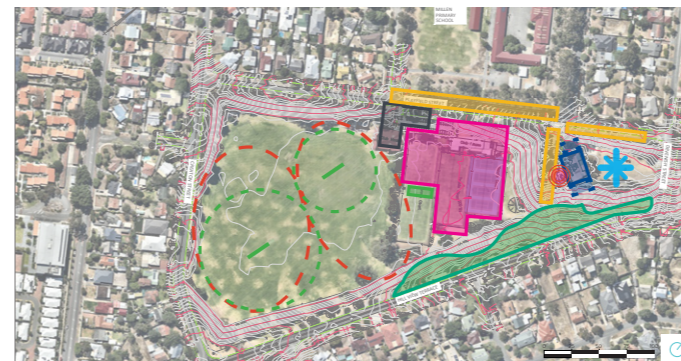
### OPTION 3, FOOTBALL FOCUS

The addition of a second football oval.

#### SCENARIO 1



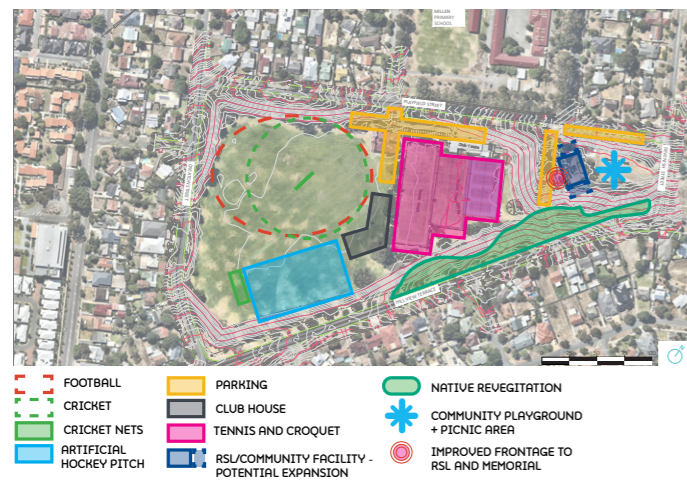
#### SCENARIO 2





# EXERCISE 3 - OPTION 1 SCENARIOS - SYNTHETIC HOCKEY AND A FOOTBALL OVAL

## OPTION 1 SCENARIO 1



### FEATURES:

- / Artificial hockey pitch located on Hill View Terrace near the tennis courts
- / A senior size footy field
- / A senior size cricket oval
- / New centrally located shared club facilities for croquet, footy, hockey and tennis
- / Existing car park extension to service clubs
- / Potential RSL building upgrade to accommodate larger functions
- / Closure of Fred Bell Parade access to RSL from Hill View Terrace
- / Improvements to forecourt of RSL and memorial
- / New Community Playground and picnic area on Playfield Reserve
- / Formalised 90-degree verge parking on Playfield Street adjacent Playfield Reserve

### PROS:

- / Hockey pitch adjacent busy road – less impact on residents and park
- / Clubhouse well positioned to serve all clubs
- / Parking logical
- / Reasonable access from Millen Primary
- / Combined club house - more efficient, potential community hub

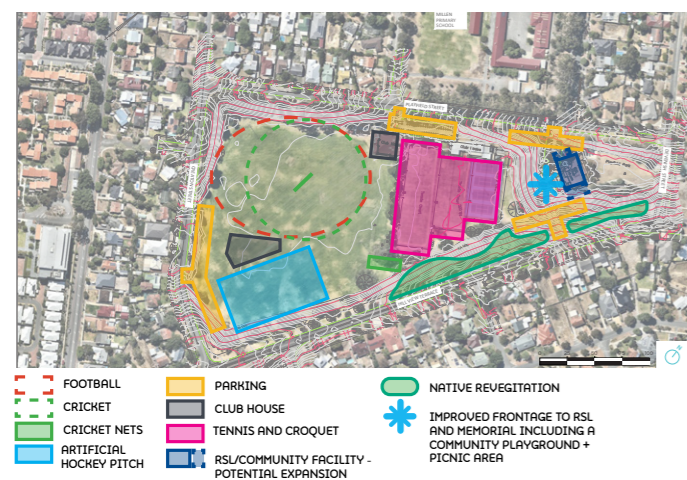
### CONS:

- / Cricket nets poorly positioned
- / Constrained pedestrian access from Hill View Tce
- / Club house does not go along side boundaries of footy or hockey
- / Difficult access along Playfield side

### OTHER COMMENTS:

- / Well positioned playground/picnic area
- / Additional parking may be required on Hill View
- / Maintain ideal cricket pitch orientation
- / Provide a play/picnic area on Higgins Park as well
- / Provide a circuit track
- / Reduction of open space by introduction of synthetic turf

## OPTION 1 SCENARIO 2



### FEATURES:

- / Artificial hockey pitch located on Hill View Terrace near Creaton Street
- / A senior size footy field
- / A senior size cricket oval
- / New shared club facilities for footy and hockey accessed from Creaton Street
- / Shared club facilities for croquet and tennis in refurbished existing footy club building
- / Potential RSL building upgrade to accommodate larger functions
- / Reconfiguration of Fred Bell Parade car parking (removal of through road)
- / Improvements to forecourt of RSL and memorial
- / New Community Playground and picnic area between RSL and tennis courts

### PROS:

- / Hockey pitch adjacent busy road – less impact on residents and park
- / Car park on Creaton Street could be used by uni students
- / Clubroom reuse – less cost

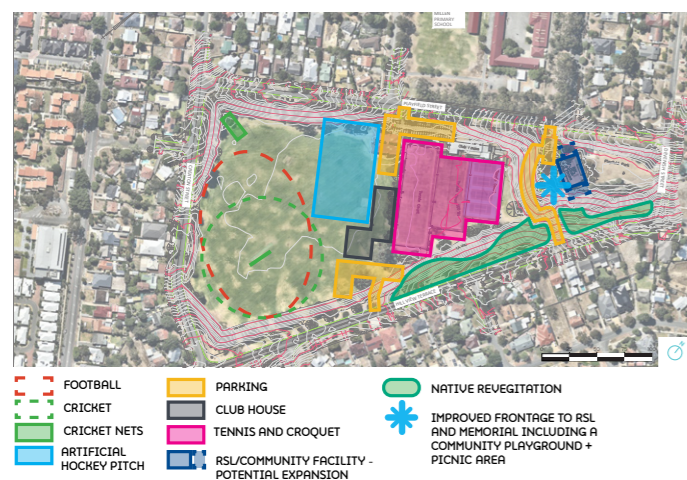
### CONS:

- / Impact on Creaton Street and Hill View Tce residents
- / Two clubrooms – less efficient and potential greater open space impact
- / Revegetation on Hill View not as effective as other options where car park access from Hill View is removed
- / Playfield reserve lawn underutilised
- / Multiple buildings don't support community hub model
- / Parking included at expense of trees

### OTHER COMMENTS:

- / Maintain ideal cricket pitch orientation
- / Provide a circuit track
- / A lot of parking
- / Reduction of open space by introduction of synthetic turf

## OPTION 1 SCENARIO 3



### FEATURES:

- / Artificial hockey pitch located on Playfield Street adjacent the tennis/croquet courts
- / A senior size footy field
- / A senior size cricket oval
- / New centrally located shared club facilities for croquet, footy, hockey and tennis
- / Existing car park extension and new car park off Hill view Terrace to service clubs
- / Potential RSL building upgrade to accommodate larger functions
- / Realignment of Fred Bell Parade car parking
- / Improvements to forecourt of RSL and memorial
- / New Community Playground and picnic area between RSL and tennis courts

### PROS:

- / Consolidated facilities in core of park

### CONS:

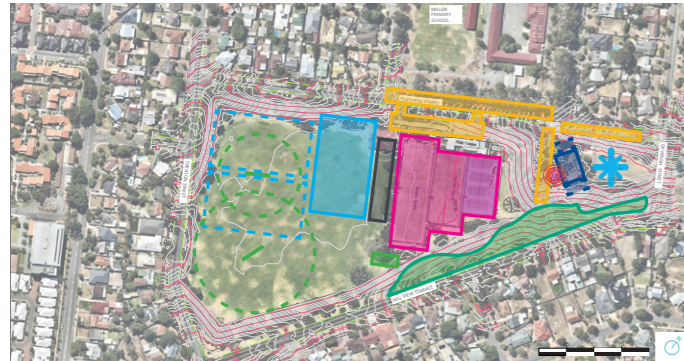
- / Impact on Playfield Street residents
- / "Odd shaped" club rooms
- / Footy looks cramped
- / Poor footy viewing from club house
- / Cricket nets orientation wrong

### OTHER COMMENTS:

- / Don't like playground location
- / Parking strangely orientated
- / reduction of open space by introduction of synthetic turf

# EXERCISE 3 - OPTION 2 SCENARIOS - SYNTHETIC HOCKEY TURF AND TWO GRASS HOCKEY TURFS

## OPTION 2 SCENARIO 1



- CRICKET
- CRICKET NETS
- ARTIFICIAL HOCKEY PITCH
- GRASS HOCKEY PITCH
- PARKING
- CLUB HOUSE
- TENNIS AND CROQUET
- RSL/COMMUNITY FACILITY - POTENTIAL EXPANSION
- NATIVE REVEGETATION
- ★ COMMUNITY PLAYGROUND + PICNIC AREA
- IMPROVED FRONTAGE TO RSL AND MEMORIAL

### FEATURES:

- / Artificial hockey pitch located on Hill View Terrace near the tennis courts
- / Two grass hockey pitches adjacent Creaton and Playfield Streets
- / A senior size cricket oval and junior cricket oval
- / New centrally located shared club facilities for croquet, hockey and tennis
- / Existing car park extensions to service clubs including closure of section of Playfield Street for additional aisle of 90-degree parking
- / Potential RSL building upgrade to accommodate larger functions
- / Closure of Fred Bell Parade access to RSL from Hill View Terrace
- / Improvements to forecourt of RSL and memorial
- / New Community Playground and picnic area on Playfield Reserve
- / Formalised 90-degree verge parking on Playfield Street adjacent Playfield Reserve

### PROS:

- / Clubhouse well positioned to serve all clubs
- / Parking logical
- / Reasonable access from Millen Primary
- / Combined club house - more efficient, potential community hub

### CONS:

- / Impact on Playfield Street residents
- / Displaces an existing use on the site
- / Cricket pitch too far away from club rooms/toilets
- / Not ideal orientation of hockey pitches
- / Blocks access from Millen primary
- / Cuts the park in half
- / Noted by some members that this option does not align with the objectives 'maintaining a sense of spaciousness' and 'easy to get around'

### OTHER COMMENTS:

- / Well positioned playground/picnic area
- / Need shade/shelter for cricket
- / Additional formal parking may not be required for hockey club
- / Suitable alternative location for the football club required
- / Reduction of open space by introduction of synthetic turf
- / Many DRG members questioned the validity of this option

## OPTION 2 SCENARIO 2



- CRICKET
- CRICKET NETS
- ARTIFICIAL HOCKEY PITCH
- GRASS HOCKEY PITCH
- PARKING
- CLUB HOUSE
- TENNIS AND CROQUET
- RSL/COMMUNITY FACILITY - POTENTIAL EXPANSION
- NATIVE REVEGETATION
- ★ IMPROVED FRONTAGE TO RSL AND MEMORIAL INCLUDING A COMMUNITY PLAYGROUND + PICNIC AREA

### FEATURES:

- / Artificial hockey pitch located on Hill View Terrace near the tennis courts
- / A senior size cricket oval
- / New centrally located shared club facilities for croquet, hockey and tennis. The facility could also potentially accommodate a relocated RSL, large hall and community rooms
- / Existing car park extension to service clubs and community facilities
- / Potential conversion of RSL building to a predominantly open air pavilion with picnic facilities, toilets, kitchen and small flexible indoor space for community use
- / Realignment of Fred Bell Parade car parking
- / Improvements to forecourt of RSL and memorial
- / New Community Playground and picnic area between RSL and tennis courts

### PROS:

- / Cricket oval has good access to club house/toilets
- / Hockey pitch adjacent busy road – less impact on residents and park
- / Doesn't cut the park in half

### CONS:

- / Car park blocks access from Millen Primary
- / Displaces an existing use on the site
- / Hockey field next to car park could create issues

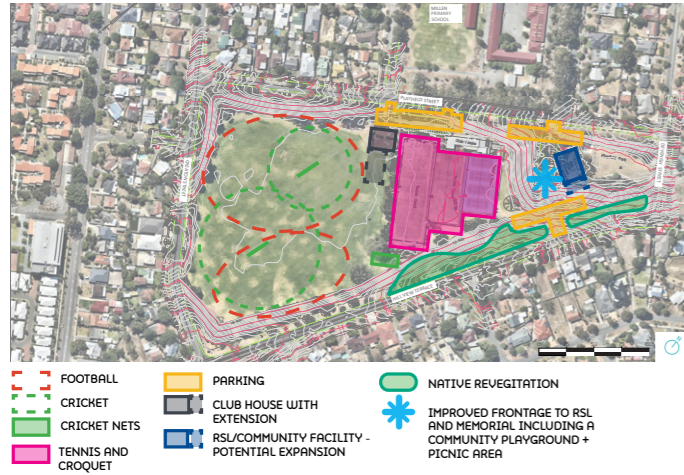
### OTHER COMMENTS:

- / Additional formal parking may not be required for hockey club
- / Additional shelter required for hockey for field away from club room
- / Questions about orientation
- / Don't like playground location
- / Suitable alternative location for the football club required
- / Reduction of open space by introduction of synthetic turf
- / Many DRG members questioned the validity of this option

# WORKSHOP 2 SUMMARY

## EXERCISE 3 - OPTION 3 SCENARIOS - TWO FOOTBALL OVALS

### OPTION 3 SCENARIO 1



#### FEATURES:

- / A senior size footy field and large junior footy field
- / A senior size cricket oval and junior cricket oval
- / Potential extension of existing footy club building to create shared club facilities for croquet, footy and tennis
- / Minor upgrade to parking to service clubs
- / Potential RSL building upgrade to accommodate larger functions
- / Reconfiguration of Fred Bell Parade car parking (removal of through road)
- / Improvements to forecourt of RSL and memorial
- / New Community Playground and picnic area between RSL and tennis courts

#### PROS:

- / Least disruptive option
- / Accommodate football club growth
- / Clubhouse well positioned to serve all clubs
- / Parking logical
- / Reasonable access from Millen Primary
- / Combined club house - more efficient, potential community hub
- / no additional fencing required

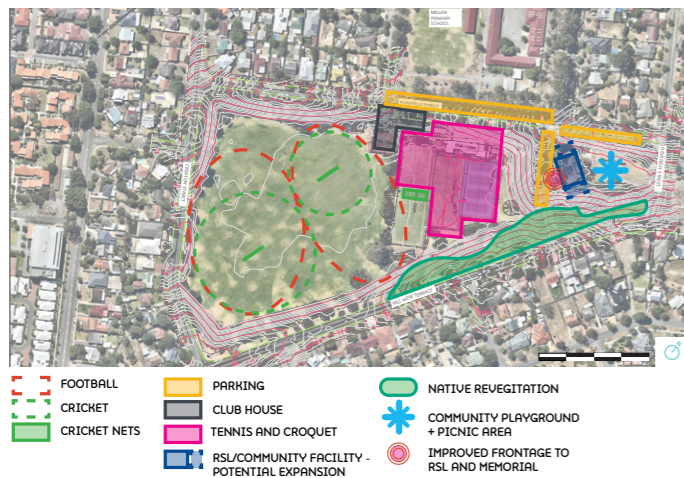
#### CONS:

- / Cricket nets poorly positioned
- / Senior cricket oval should be alongside club rooms
- / Constrained pedestrian access from Hill View
- / Difficult access along Playfield side
- / no new building considered in this option
- / does not accommodate a synthetic hockey turf

#### OTHER COMMENTS:

- / Well positioned playground/picnic area
- / Additional parking may be required on Hill View Tce or Creaton St
- / Maintain ideal cricket pitch orientation
- / Provide a play/picnic area on Higgins Park as well

### OPTION 3 SCENARIO 2



#### FEATURES:

- / Two senior footy fields
- / A senior size cricket oval and junior cricket oval
- / Four grass tennis courts relocated to adjacent Playfield Street to accommodate larger football fields
- / New centrally located shared club facilities for croquet, football and tennis
- / Closure of section of Playfield Street for aisle of 90-degree parking to service clubs
- / Potential RSL building upgrade to accommodate larger functions
- / Closure of Fred Bell Parade access to RSL from Hill View Terrace
- / Improvements to forecourt of RSL and memorial
- / New Community Playground and picnic area on Playfield Reserve
- / Formalised 90-degree verge parking on Playfield Street adjacent Playfield Reserve

#### PROS:

- / Clubhouse well positioned to serve all clubs
- / Parking logical
- / Reasonable access from Millen Primary
- / Existing open space maintained
- / Combined club house - more efficient, potential community hub

#### CONS:

- / Cricket nets poorly positioned
- / Constrained pedestrian access from Hill View
- / Club house does not go along side boundaries of footy
- / Difficult access along Playfield side
- / Not ideal football orientation

#### OTHER COMMENTS:

- / Well positioned playground/picnic area
- / Maintain ideal cricket pitch orientation
- / Provide a play/picnic area on Higgins Park as well
- / Provide a circuit track
- / Consider parking along Creaton St

# WORKSHOP 2 SUMMARY

## EXERCISE 4 - OTHER SUGGESTIONS

In exercise 4 the DRG were shown a map of Higgins Park and Playfield Reserve and asked to make further suggestions. The comments have been colour coded to show responses made by the same member of the DRG.

### Interaction details:

Vistors: 15

Contributors: 6

Contributions: 17

"Improve efficiency & multi-use of the tennis site (to compliment tennis schedule of course). Perhaps considering during low-use times, freeing up some court space to put b/ball court surface mats (they are new & upcoming, perhaps other mats in existence that could be used for other sports), that could accommodate half-court/full court b/ball and can be simply lifted when required for tennis peak season. This would reduce footprint & need to continually add on to existing infrastructure, doing more tree removal/damage

With regards to the old tennis clubrooms-if these are going, could the mens shed perhaps be relocated here, or somewhere on this site? Great to increase engagement with youth & various primary/high schools around and would create project diversity with many members I'm sure happy to help out in maintenance of multi-sport clubrooms etc. The members may even join the croquet, tennis or other & vice-versa, hence providing another opportunity for predicted ageing population. I appreciate hockey can be shared with tennis but still feel residential amenity & required additional parking makes this site still unsuitable and not the best option to support viability of football or hockey clubs.

Then...opportunities to improve summer utilisation-perhaps by relocating other cricket teams as per previous member suggestions (Fletcher to higgins, or Carlisle cricket club), numerous junior ones. Would still caution them utilising single multi-purpose clubroom as opposed to separate structures.

Smaller grassed formal clubs could be considered such as ultimate frisbee (run through all uni campuses & often needing to hire/utilise local parks etc due to no room on uni grounds), area 5 football was also mentioned as a summer option, not sure about what season lacrosse is, AFL 9's is a summer sport with a vic park team, the info should be on their fb page."

"Rather than try to build on already existing square clubrooms, re-design more efficient multi-purpose clubroom, location could be where Jendar suggested in previous pin? Or moved up more parallel to the tennis fence. Rectangular design that blends, more centralised viewing to all ovals (either Hill View) or further up. Agree that a blended design more depicting the landscape would be better options-Marr Mooditj building on Clontarf is a good example of this, with similar landscape."

"I made a comment elsewhere that the size of the field suggested for the Millen Primary School oval (in the scenarios section) seems optimistic so I've plotted the dimensions suggested on the attached image. Also bear in mind that there is a building planned for the NE corner of the oval which will have an additional impact on potential size. More generally, before the school considers this proposal, we would like a clear outline of how this will be maintained. We are supportive in principle but would need a detailed proposal before we ask the school community. Auskick games/training for the smaller kids already take place here on occasion."

\*Comment not pinned - "Most of the pictures in the survey for the look of clubrooms were quite modern. Is there something else that fits in with the age and history of the area, that would blend in, rather than be such an imposition on the eye. Keep the oval as the feature, rather than the building?"

"In all of this, it appears that the Tennis Club with the smallest membership group has facilities beyond its needs. Whilst there is a history there, from experience a large proportion of people that play there are social members who come once/week for a hit. It seems a shame that the footy club kids that actually live in Vic Park could be moved elsewhere. ToVP have built new tennis courts - can't the tennis club make use of these for their overflow. Hockey have said their turf can also be used for tennis - wouldn't it make sense to remove some tennis courts to fit hockey, keep the big oval as it is, or even acquire a second oval, redevelop Playfield Reserve to make it more useable. I don't see why, with so much space there needs to be a loser."

"By relocating these clubrooms rather than building on existing-this area could be an additional playground/nature/water space, or, picnicing area with more bbqs with Indigenous themes to them also, given its proximity to a main entrance to the area. Perhaps considering multiple, smaller play sites, connected by walking/quality paths that link to other suggestions on this map i.e. skate park suggestion, nature playground under trees. They could all be themed to cater for slightly different ages etc. Examples to consider are: Chevron Parkland outside Optus stadium, crooked carrot cafe (South-West), Little Gecko cafe (in Kings Park), different play areas connected by paths. Could be a good way to utilise small, underused pockets, particularly around the tennis club perimeters. Multiple playground/picnic type sites in strategic locations around perimeter & 'wasted space areas' may encourage greater use of all areas. The key would be in the pathway access." <https://buggybuddys.com.au/things-to-do/playgrounds-and-parks-in-perth/chevron-parkland-optus-stadium/> <https://buggybuddys.com.au/the-crooked-carrot-myalup/>

"My suggestion is that we move away from have a single multi tenant club facility and look at building a 2nd building on the Hill View Tce side. The downward slope could be used to create massive storage under the building thus reducing the footprint of the building. By building back off the slope this will not impact the available park space. Next a service lane type parking solution is installed thus limiting the impact on the current flow on Hill View Tce. This same concept could be pushed back into the corner of Creaton and Hill View Tce and the a parking created in Creaton. 2. Using a grass hockey field solution along Hill View Tce, I would like to see if we can in cooperate a 2nd junior cricket oval. Should the pitch encroach on the hockey playing area then it can be covered either with turf or special mats. This building would service a hockey or AFL solution"

# WORKSHOP 2 SUMMARY

## EXERCISE 4 - OTHER SUGGESTIONS

In exercise 4 the DRG were shown a map of Higgins Park and Playfield Reserve and asked to make further suggestions. The comments have been colour coded to show responses made by the same member of the DRG.

### Interaction details:

Visitors: 15

Contributors: 6

Contributions: 17



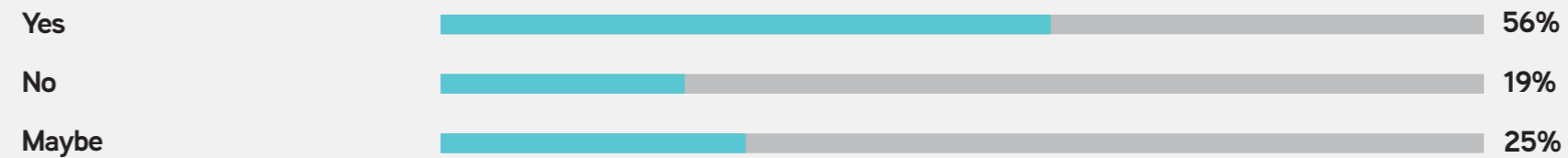
# WORKSHOP 2 SUMMARY

## QUICK POLL RESULTS

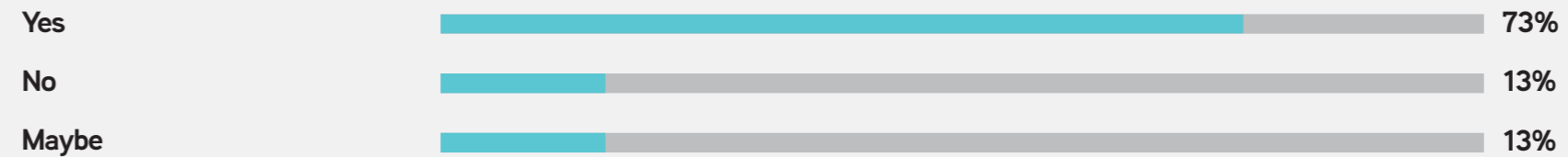
Following the on-line workshop exercises the consultant team and Town of Victoria Park presented a preliminary overview of the results of the consultation to the DRG. The DRG were then shown a series of questions relating to specific elements of Higgins Park and Playfield Reserve and were asked to click on the appropriate answer they believed suitable to each question. Following are the results of the quick poll questions.

# quick poll results

## 1. Should there be more areas revegetated with native planting other than currently shown?



## 2. Do you see benefit in closing Playfield Street for the length of the school frontage?



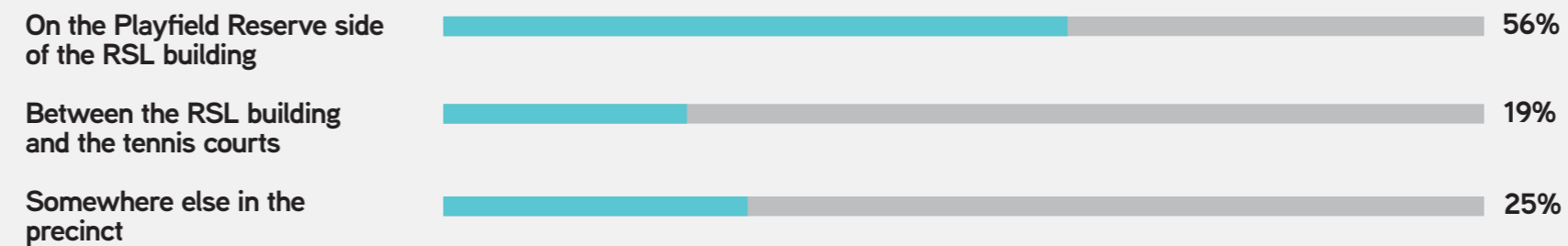
## 3. Which would be the biggest benefit of closing Playfield Street? (Multiple Choice)



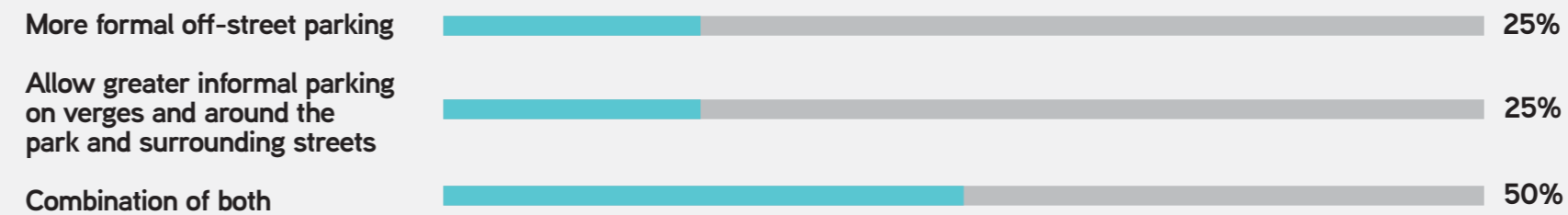
\*Note: percentages a result of rounding by Zoom quick poll

# quick poll results

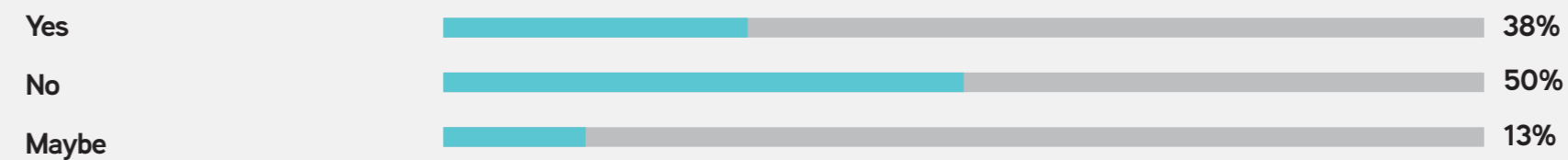
## 4. Where would you locate a community playground and picnic area?



## 5. If additional parking requirements are identified, which would you prefer?



## 6. Are you willing to accept removal of some trees to enable more users to enjoy the park?



## 7. Which of the following two do you prefer to accommodate larger functions and more diverse/flexible community group gatherings?



\*Note: percentages a result of rounding by Zoom quick poll