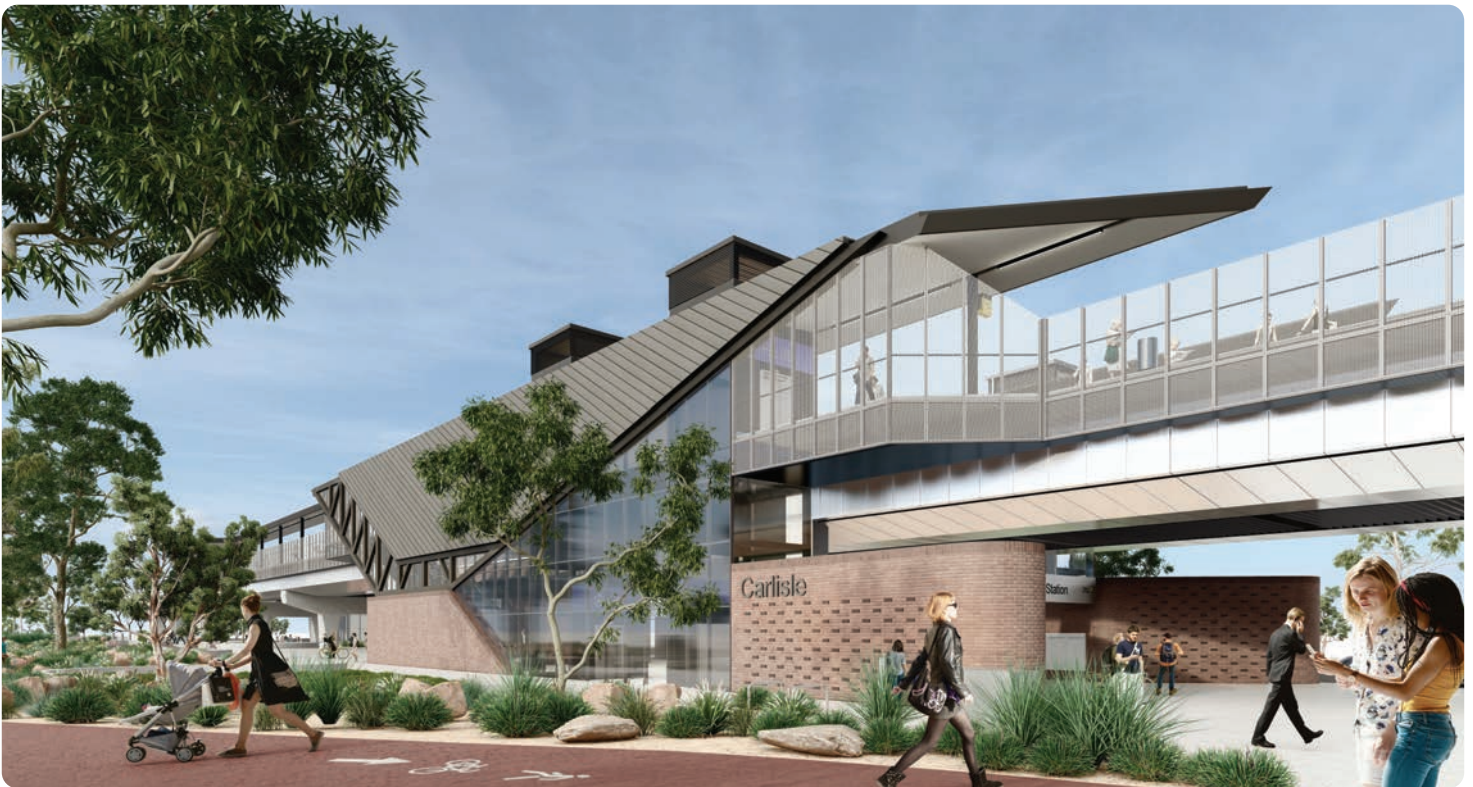


Carlisle Station Public Space

As part of the Victoria Park-Canning Level Crossing Removal Project, the Mint Street level crossing will be removed and Carlisle Station will be rebuilt as an elevated station, closer to Mint/Archer Street with a modern forecourt.



Carlisle Station

- relocated further north to allow access from Mint/Archer Street
- two ground level entrances on both the north and south sides
- 57 parking bays
- storage for 18 bicycles
- four lifts

Final design concepts subject to development application approval and conditions.

METRONET acknowledges the People of the Noongar Nation as the Traditional Custodians of the land and waters on which the METRONET Program of Projects is located. We pay our respects to their Elders, both past and present, and thank them for their continuing connection to country, culture and community.



Carlisle Station public space

- multi-generational space with sensory play, flying fox, and community stage
- fitness park with accessible equipment and space for group circuit training
- nature play and discovery trail with balance logs, timber steps and storytelling challenges
- existing shared path alignment on Rutland Avenue maintained
- prioritising pedestrian and cyclist movement with slow speed zones
- passive surveillance with security fencing, CCTV, clearly identified paths and plenty of lighting

How we got here

Design Planning

Early community consultation informed designs through the METRONET Preliminary Place Plans during the planning stage of the project.



Design Consultation

High-level concepts designs were workshopped with local government, Community Reference Group members and impacted community groups. Designs were also promoted broadly online, via email and in the community, for locals to provide feedback, and complete an online survey.



Design Review

Refined concepts have been design reviewed with a Design Working Group with members from the Office of the Government Architect.

The Victoria Park-Canning Level Crossing Removal Project is Perth's first major elevated rail design to improve public transport safety, create new and versatile public open space for the community and reduce traffic congestion.

Scan the QR code to visit the project website



Your feedback is important.

Please contact METRONET if you have any questions about the Victoria Park-Canning Level Crossing Removal Project or would like more information.



METRONET

☎ 9326 3666
✉ info@metronet.wa.gov.au
🌐 metronet.wa.gov.au

📘 facebook.com/perthmetronet
🐦 twitter.com/metronetperth
📷 @metronet_perth